



Fine Japanese prints

Gallery Soumei-do

Dear Friends of Japanese Prints,

A Big thank you for supporting our gallery. We issued new catalogue and hope enjoy it.
If there are any items of interest, Please do not hesitate to email or fax.

Conditions of sale

All lots (unless noted) are guaranteed genuine. Condition reports are available upon request.

How to order

Please tell us your name, address and telephone number by email.
We will tell you the total amount of the payment. (including Shipping cost)

Shipping

Purchase will not be transferred until payment in full has been received.
Overseas shipping of prints are usually by EMS (Express Mail Service).
Shipping cost of single-sheet print to North America and Europe cost approximately 2,000 Yen by EMS.

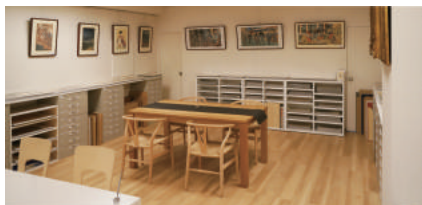
Payment

We accept the payment by PAYPAL and Bank transfer.
After confirm your order by our mail, usually we are going to send you a Paypal invoice.

We also accept payments via Bank Transfers.

Bank transfer fee is not included in the amount. Please burden this at your expense.
Bank information is as follows.

BANK OF TOKYO-MITSUBISHI UFJ,LTD JIMBOCHO BRANCH
2-2 Kanda Jimbocho Chiyoda-ku Tokyo 101-0051 Japan
Account Number : Saving Account 0920217
Account Name : Gallery Soumeido
Swift code : BOTKJPJT



Gallery Soumei-do

Address : Yamada-bldg 7th floor 1-8 Kanda Jimbocho, Chiyoda-ku
Tokyo Japan 101-0051

Access : Hanzomon line, Shinjuku line, Mita line Jimbocho sta. 1min walk
from exit A5

TEL : +81(3)-3219-7240

FAX : +81(3)-3219-7241

URL : <http://www.soumei.biz>

Email : muneyoshi.abe@soumei.biz

Gallery hours : 11:00-18:30 (Closed on Sundays, Mondays and Public holidays)